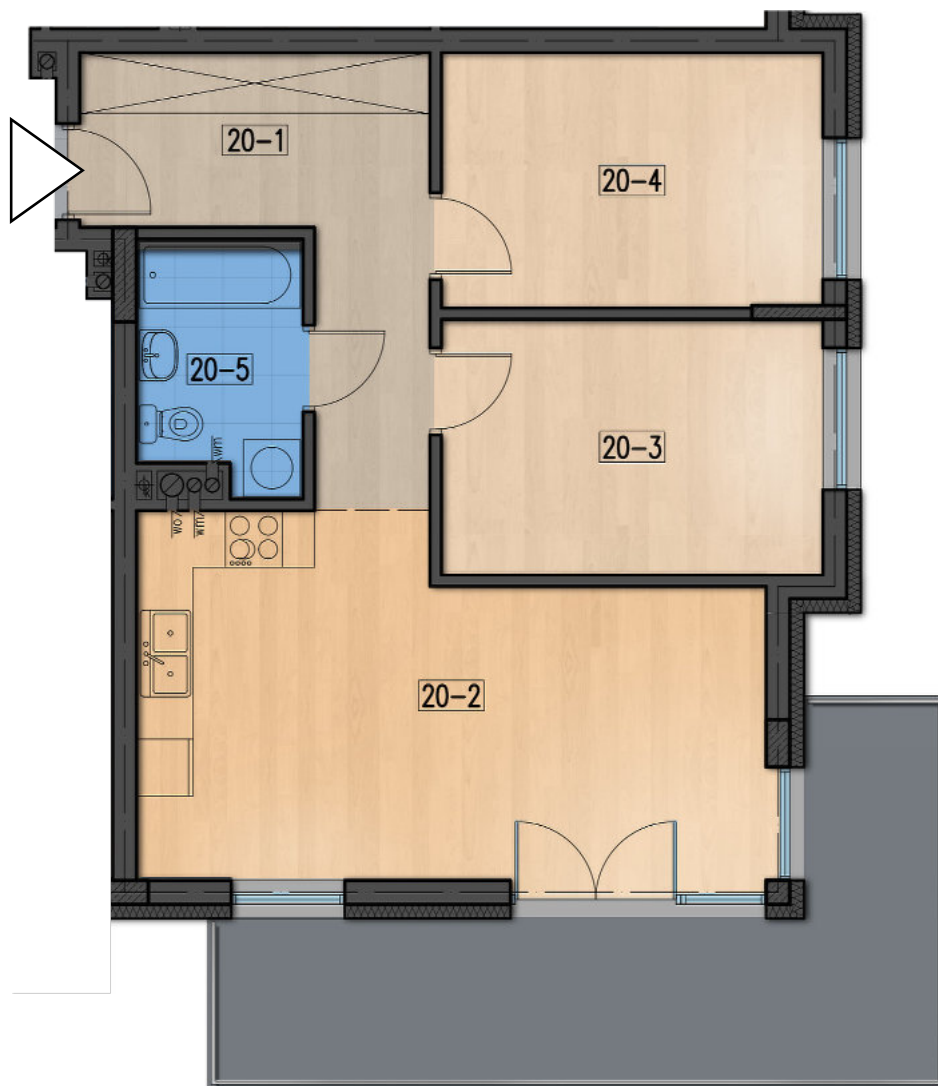




Osiedle Powstańców



pow. 59,15m²



| | | |
|------|-----------------|---------------------|
| 20-1 | korytarz | 10,35m ² |
| 20-2 | salon + kuchnia | 22,95m ² |
| 20-3 | pokój | 10,75m ² |
| 20-4 | pokój | 10,72m ² |
| 20-5 | łazienka | 4,38m ² |